

ANTICANCER RESEARCH

International Journal of Cancer Research and Treatment

ISSN: 0250-7005

Early Predictive Value of Non-response to Docetaxel in Neoadjuvant Chemotherapy in Breast Cancer Using ^{18}F -FDG-PET

TOMOKO HIRAKATA¹, YASUHIRO YANAGITA¹, TOMOMI FUJISAWA¹, TAKAAKI FUJII²,
TERUHIKO KINOSHITA³, HIROYUKI HORIKOSHI⁴, NARIYUKI OYA⁴,
TSUKASA AKIYOSHI⁴, MISA IJIMA⁵, TAKESHI MIYAMOTO¹ and HIROYUKI KUWANO²

*Departments of ¹Breast Oncology, ⁴Diagnostic Radiology and
⁵Pathology, Prefectural Cancer Center, Ota City, Gunma, Japan;
²Department of General Surgical Science, Graduate School of Medicine,
Gunma University, Maebashi City, Gunma, Japan;
³Department of Surgery, Tsurugaya Hospital, Isesaki City, Gunma, Japan*

Reprinted from
ANTICANCER RESEARCH 34: 221-226 (2014)

ANTICANCER RESEARCH

International Journal of Cancer Research and Treatment



ISSN (print): 0250-7005

ISSN (online): 1791-7530

Editorial Board

- P. A. ABRAHAMSSON, *Malmö, Sweden*
B. B. AGGARWAL, *Houston, TX, USA*
T. AKIMOTO, *Kashiwa, Chiba, Japan*
A. ARGIRIS, *San Antonio, TX, USA*
J. P. ARMAND, *Toulouse, France*
V. I. AVRAMIS, *Los Angeles, CA, USA*
R. C. BAST, *Houston, TX, USA*
G. BAUER, *Freiburg, Germany*
E. E. BAULIEU, *Le Kremlin-Bicetre, France*
Y. BECKER, *Jerusalem, Israel*
E. J. BENZ, Jr., *Boston, MA, USA*
J. BERGH, *Stockholm, Sweden*
D. D. BIGNER, *Durham, NC, USA*
A. BÖCKING, *Diüsseldorf, Germany*
G. BONADONNA, *Milan, Italy*
F. T. BOSMAN, *Lausanne, Switzerland*
G. BROICH, *Monza, Italy*
J. M. BROWN, *Stanford, CA, USA*
Ø. S. BRULAND, *Oslo, Norway*
M. M. BURGER, *Basel, Switzerland*
M. CARBONE, *Honolulu, HI, USA*
C. CARLBERG, *Kuopio, Finland*
J. CARLSSON, *Uppsala, Sweden*
A. F. CHAMBERS, *London, ON, Canada*
P. CHANDRA, *Frankfurt am Main, Germany*
L. CHENG, *Indianapolis, IN, USA*
J.-G. CHUNG, *Taichung, Taiwan, ROC*
E. DE CLERCQ, *Leuven, Belgium*
W. DE LOECKER, *Leuven, Belgium*
W. DEN OTTER, *Amsterdam, The Netherlands*
E. P. DIAMANDIS, *Toronto, ON, Canada*
G. TH. DIAMANOPOULOS, *Boston, MA, USA*
D. W. FELSHER, *Stanford, CA, USA*
J. A. FERNANDEZ-POL, *Chesterfield, MO, USA*
I. J. FIDLER, *Houston, TX, USA*
A. P. FIELDS, *Jacksonville, FL, USA*
B. FUCHS, *Zurich, Switzerland*
G. GABBIANI, *Geneva, Switzerland*
R. GANAPATHI, *Charlotte, NC, USA*
A. F. GAZDAR, *Dallas, TX, USA*
J. H. GESCHWIND, *Baltimore, MD, USA*
A. GIORDANO, *Philadelphia, PA, USA*
G. GITSCH, *Freiburg, Germany*
R. H. GOLDFARB, *Saranac Lake, NY, USA*
S. HAMMARSTRÖM, *Umeå, Sweden*
I. HELLSTRÖM, *Seattle, WA, USA*
L. HELSON, *Quakertown, PA, USA*
R. M. HOFFMAN, *San Diego, CA, USA*
K.-S. JEONG, *Daegu, South Korea*
S. C. JHANWAR, *New York, NY, USA*
J. V. JOHANNESSEN, *Oslo, Norway*
B. KAINA, *Mainz, Germany*
P.-L. KELLOKUMPU-LEHTINEN, *Tampere, Finland*
B. K. KEPPLER, *Vienna, Austria*
D. G. KIEBACK, *Riesa (Dresden), Germany*
R. KLAPDOR, *Hamburg, Germany*
U. R. KLEEBERG, *Hamburg, Germany*
P. KLEIHUES, *Zürich, Switzerland*
E. KLEIN, *Stockholm, Sweden*
S. D. KOTTARIDIS, *Athens, Greece*
G. R. F. KRUEGER, *Köln, Germany*
D. W. KUFE, *Boston, MA, USA*
Pat M. KUMAR, *Manchester, UK*
Shant KUMAR, *Manchester, UK*
M. KUROKI, *Fukuoka, Japan*
O. D. LAERUM, *Bergen, Norway*
F. J. LEJEUNE, *Lausanne, Switzerland*
L. F. LIU, *Piscataway, NJ, USA*
D. M. LOPEZ, *Miami, FL, USA*
E. LUNDGREN, *Umeå, Sweden*
H. T. LYNCH, *Omaha, NE, USA*
Y. MAEHARA, *Fukuoka, Japan*
J. MAHER, *London, UK*
J. MARESCAUX, *Strasbourg, France*
J. MARK, *Skövde, Sweden*
S. MITRA, *Houston, TX, USA*
M. MUELLER, *Heidelberg, Germany*
F. M. MUGGIA, *New York, NY, USA*
M. J. MURPHY, Jr., *Dayton, OH, USA*
M. NAMIKI, *Kanazawa, Ishikawa, Japan*
R. NARAYANAN, *Boca Raton, FL, USA*
K. NILSSON, *Uppsala, Sweden*
S. PATHAK, *Houston, TX, USA*
J. L. PERSSON, *Malmö, Sweden*
S. PESTKA, *Piscataway, NJ, USA*
G. J. PILKINGTON, *Portsmouth, UK*
C. D. PLATSOUKAS, *Norfolk, VA, USA*
F. PODO, *Rome, Italy*
A. POLLIACK, *Jerusalem, Israel*
G. REBEL, *Strasbourg, France*
M. RIGAUD, *Limoges, France*
U. RINGBORG, *Stockholm, Sweden*
M. ROSELLI, *Rome, Italy*
A. SCHAUER, *Göttingen, Germany*
M. SCHNEIDER, *Wuppertal, Germany*
A. SETH, *Toronto, ON, Canada*
G. S. STEIN, *Burlington, VT, USA*
T. STIGBRAND, *Umeå, Sweden*
T. M. THEOPHANIDES, *Athens, Greece*
B. TOTH, *Omaha, NE, USA*
P. M. UELAND, *Bergen, Norway*
H. VAN VLIERBERGHE, *Ghent, Belgium*
P. T. VIHKO, *Oulu, Finland*
R. G. VILE, *Rochester, MN, USA*
M. WELLER, *Zurich, Switzerland*
B. WESTERMARK, *Uppsala, Sweden*
Y. YEN, *Duarte, CA, USA*
M.R.I. YOUNG, *Charleston, SC, USA*
B. ZUMOFF, *New York, NY, USA*
J. G. DELINASIOS, *Athens, Greece*
Managing Editor
G. J. DELINASIOS, *Athens, Greece*
Assistant Managing Editor and Executive Publisher
E. ILIADIS, *Athens, Greece*
Production Editor

Editorial Office: International Institute of Anticancer Research, 1st km Kapandritiou-Kalamou Rd., Kapandriti, P.O. Box 22, Attiki 19014, Greece. Tel / Fax: +30-22950-53389.

E-mails: Editorial Office: journals@iiaar-anticancer.org

Managing Editor: editor@iiaar-anticancer.org

ANTICANCER RESEARCH supports: (a) the establishment and the activities of the INTERNATIONAL INSTITUTE OF ANTICANCER RESEARCH (IAR; Kapandriti, Attiki, Greece); and (b) the organization of the International Conferences of Anticancer Research.

For more information about ANTICANCER RESEARCH, IAR and the Conferences, please visit the IAR website: www.iiaar-anticancer.org

Publication Data: ANTICANCER RESEARCH (AR) is published monthly from January 2009. Each annual volume comprises 12 issues. Annual Author and Subject Indices are included in the last issue of each volume. ANTICANCER RESEARCH Vol. 24 (2004) and onwards appears online with Stanford University HighWire Press from April 2009.

Copyright: On publication of a manuscript in AR, which is a copyrighted publication, the legal ownership of all published parts of the paper passes from the Author(s) to the Journal.

Annual Subscription Rates 2014 per volume: Institutional subscription Euro 1,650.00 - print or online. Personal subscription Euro 780.00 - print or online. Prices include rapid delivery and insurance. The complete previous volumes of Anticancer Research (Vol. 1-33, 1981-2013) are available at 50% discount on the above rates.

Subscription Orders: Orders can be placed at agencies, bookstores, or directly with the Publisher. Cheques should be made payable to J.G. Delinasios, Executive Publisher of Anticancer Research, Athens, Greece, and should be sent to the Editorial Office.

Advertising: All correspondence and rate requests should be addressed to the Editorial Office.

Book Reviews: Recently published books and journals should be sent to the Editorial Office. Reviews will be published within 2-4 months.

Articles in ANTICANCER RESEARCH are regularly indexed in all bibliographic services, including Current Contents (Life Sciences), Science Citation Index, Index Medicus, Biological Abstracts, PubMed, Chemical Abstracts, Excerpta Medica, University of Sheffield Biomedical Information Service, Current Clinical Cancer, AIDS Abstracts, Elsevier Bibliographic Database, EMBASE, Compendex, GEOBASE, EMBiology, Elsevier BIOBASE, FLUIDEX, World Textiles, Scopus, Progress in Palliative Care, Cambridge Scientific Abstracts, Cancergram (International Cancer Research Data Bank), MEDLINE, Reference Update - RIS Inc., PASCAL-CNRS, Inpharma-Reactions (Datastar, BRS), CABS, Immunology Abstracts, Telegen Abstracts, Genetics Abstracts, Nutrition Research Newsletter, Dairy Science Abstracts, Current Titles in Dentistry, Inpharma Weekly, BioBase, MedBase, CAB Abstracts/Global Health Databases, Investigational Drugs Database, VINITI Abstracts Journal, Leeds Medical Information, PubSub, Sociedad Iberoamericana de Información Científica (SIIC) Data Bases.

Authorization to photocopy items for internal or personal use, or the internal or personal clients, is granted by ANTICANCER RESEARCH, provided that the base fee of \$2.00 per copy, plus 0.40 per page is paid directly to the Copyright Clearance Center, 27 Congress Street, Salem, MA 01970, USA. For those organizations that have been granted a photocopy license by CCC, a separate system of payment has been arranged. The fee code for users of the Transactional Reporting Service is 0250-7005/2014 \$2.00 +0.40.

The Editors and Publishers of ANTICANCER RESEARCH accept no responsibility for the opinions expressed by the contributors or for the content of advertisements appearing therein.

Copyright© 2014, International Institute of Anticancer Research (Dr. John G. Delinasios), All rights reserved.

D.T.P. BY IIAAR

PRINTED BY ENTYPPO, ATHENS, GREECE
PRINTED ON ACID-FREE PAPER

Early Predictive Value of Non-response to Docetaxel in Neoadjuvant Chemotherapy in Breast Cancer Using ^{18}F -FDG-PET

TOMOKO HIRAKATA¹, YASUHIRO YANAGITA¹, TOMOMI FUJISAWA¹, TAKAAKI FUJII²,
TERUHIKO KINOSHITA³, HIROYUKI HORIKOSHI⁴, NARIYUKI OYA⁴,
TSUKASA AKIYOSHI⁴, MISA IJIMA⁵, TAKESHI MIYAMOTO¹ and HIROYUKI KUWANO²

*Departments of ¹Breast Oncology, ⁴Diagnostic Radiology and
⁵Pathology, Prefectural Cancer Center, Ota City, Gunma, Japan;
²Department of General Surgical Science, Graduate School of Medicine,
Gunma University, Maebashi City, Gunma, Japan;
³Department of Surgery, Tsurugaya Hospital, Isesaki City, Gunma, Japan*

Abstract. *Background: The aim of this prospective study of patients with breast cancer was to identify non-responders to docetaxel in neoadjuvant chemotherapy (NCT) using fluorine-18-fluorodeoxyglucose positron-emission tomography (^{18}F -FDG-PET). Patients and Methods: We analyzed the maximum standardized uptake value (SUV_{max}) of ^{18}F -FDG-PET before and after the first course and the reduction rate in tumor size shown by magnetic resonance imaging (MRI) before the first and after the fourth course of docetaxel. Results: None of the eight patients (0%) whose SUV_{max} decrease was less than 18% revealed a clinical partial response or clinical complete response; Seven out of the sixteen patients (44%) with an SUV_{max} decrease over 45% achieved a complete response. Conclusion: An SUV_{max} reduction rate less than 18% is observed in patients with breast cancer after the first course of docetaxel in NCT and may be indicator of non-response to docetaxel.*

Many patients with advanced breast cancer undergo neoadjuvant chemotherapy (NCT). NCT should result in an at least partial response, and if such a response is not obtained, the NCT regimen should be discontinued. It is more important to detect non-responders rather than responders in NCT in order to avoid cytotoxic treatment.

Correspondence to: Tomoko Hirakata, MD, Department of Breast Oncology, Gunma Prefectural Cancer Center, 617-1 Takabayashinishi-cho, Ota City, Gunma, Japan, 373-8550. Tel: +81 0270255022, Fax: +81 0270255023, e-mail: hiralyto@gmail.com

Key Words: ^{18}F -FDG-PET, breast cancer, docetaxel, neoadjuvant chemotherapy, non-responders.

A patient's clinical response to chemotherapy is usually determined after several courses of chemotherapy, by changes in tumor size shown by imaging modalities such as ultrasound, magnetic resonance imaging (MRI) and computed tomography (CT) (1).

^{18}F -Fluorodeoxyglucose (^{18}F -FDG) is an agent for positron-emission tomographic (PET) imaging agent for both detecting disease and monitoring responses to treatment (1). ^{18}F -FDG-PET was found to be effective for monitoring cancer cell viability of tissues and tumors (2), and it is used to evaluate the glucose metabolic rates of such tissues because most neoplasms have high glycolytic rates. Warburg first described this fundamental aberration of malignant cells in the 1930s (3).

The anaerobic metabolism of glucose is a fundamental property of all tumors, even in the presence of an adequate oxygen supply (4). Several studies have revealed a relationship between changes in tumor glucose metabolism and patients' response to treatment in various types of cancers (5-10). Several groups have also reported the possibility of using ^{18}F -FDG-PET as a parameter of response to NCT in breast cancer (11-20).

The addition of four courses of preoperative docetaxel after four courses of preoperative therapy with adriamycin with cyclophosphamide (AC) significantly increased the clinical and pathologica response rates for operable breast cancer (21, 22). Giordano *et al.* reported a decline in the use of anthracycline for breast cancer, and they noted that the majority of patients were instead receiving taxane-based chemotherapy (23).

The aim of the present prospective study was to evaluate the predictive value of ^{18}F -FDG-PET to detect poor clinical response to preoperative docetaxel monotherapy in patients with breast cancer.

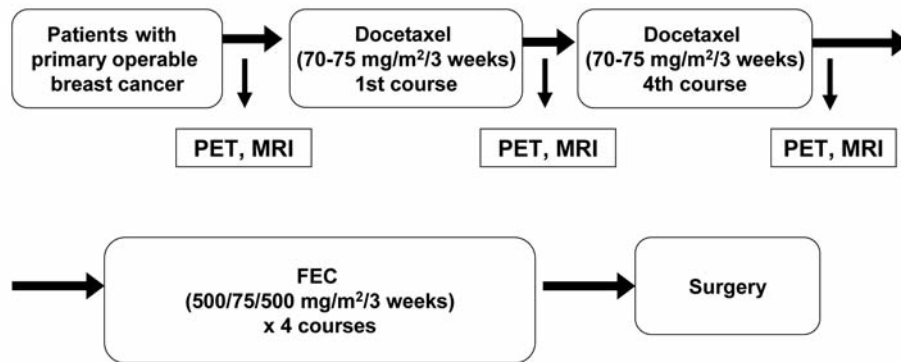


Figure 1. Study protocol. PET: Positron emission tomography, MRI: magnetic resonance imaging, FEC: fluorouracil/epirubicin/cyclophosphamide.

Patients and Methods

Patients. From August 2007 to December 2010, 41 patients with T1-T4, N0-N3, or M0, with non-metastatic, non-inflammatory breast cancer with performance status 0 or 1 (World Health Organization) were treated at the Gunma Prefectural Cancer Center in Japan. The cases of 37 of these patients were evaluable. The exclusion criteria were: age older than 70 years, inflammatory or bilateral breast cancer, previous treatment for breast cancer, presence of distant metastases, pregnant or breastfeeding at the time of diagnosis, other previous or current malignancies, diabetes mellitus, and severe cardiac hematological, renal, pulmonary or hepatic abnormalities.

The protocol of the study (Figure 1) was approved by the Ethics Committee of the Gunma Prefectural Cancer Center, and all patients gave their written informed consent before enrollment.

Chemotherapy. All 37 patients were treated with chemotherapy consisting of four courses of docetaxel ($70\text{-}75\text{ mg/m}^2$) followed by four courses of fluorouracil/epirubicin/cyclophosphamide (FEC) at $500/75/500\text{ mg/m}^2$ before surgery. Each course was administered every three weeks. Trastuzumab was not concomitantly added to docetaxel in the NCT; it was administered after surgery for epidermal growth factor receptor-2 (HER2)-positive breast cancer for one year. The most efficient way to evaluate patient response to docetaxel is with pathological findings after surgery. However, we did not carry-out surgery until after the fourth course of docetaxel because anthracycline and taxane are sequentially required in NCT for pathological complete response (pCR) (22).

^{18}F -FDG-PET imaging. ^{18}F -FDG-PET imaging was performed with the PET/CT scanner BIOGRAPH 16 (Siemens, Erlangen, Germany). An ^{18}F -FDG-PET scan of a whole body was performed before (baseline), after the first course of docetaxel. The latter scan was performed on day 15 (range -1 to 2 days) after chemotherapy. The ^{18}F -FDG-PET images were analyzed by two radiologists, using the maximum standardized uptake value (SUV_{max}). A region of interest (ROI) was placed manually over the area of maximal activity on slices with the clearest definition of the tumor. Patients fasted at least five hours before the injection of $185\text{ MBq }^{18}\text{F}$ -FDG. For the PET, the patient was positioned prone with hands held over the head on the scanner couch after an uptake period of 60 min.

Blood glucose levels. All patients had a plasma glucose concentration within the reference range, less than 110 mg/dl just before the injection of $185\text{ MBq }^{18}\text{F}$ -FDG at each scan.

Magnetic resonance imaging (MRI). Contrast-enhanced MRI showed a high correlation between measurements of residual disease and those obtained at pathology, validating the sensitivity of MRI of the breast after chemotherapy (24). In the present study, MRI response rate was measured at baseline and after the fourth course of docetaxel. Each approach was performed on day 15 (range -1 to 2 days) after the chemotherapy. The MRI images were evaluated by two radiologists using the Response Evaluation Criteria In Solid Tumors (RECIST) (http://www.eortc.be/recist/documents/RECIST_Guidelines.pdf).

Clinical assessment. We assessed the clinical efficacy of the treatment by determining the reduction rate of the primary tumor using two parameters: the SUV_{max} before and after the first course of docetaxel, and the tumor size with MRI before the first and after the fourth course of docetaxel. Each reduction rate was used to consider whether there was a correlation between the early change of SUV_{max} and the later morphological shrinkage of tumor shown by MRI. In cases of multiple cancer in the breast, we set the ROI at the highest SUV_{max} from among the lesions.

Pathology. The pathological diagnosis of invasive breast cancer was performed by ultrasound-guided core needle biopsy (CNB) before treatment in all 37 patients, and estrogen receptor (ER), progesterone receptor (PgR), and HER2 were measured by immunohistochemistry (IHC). ER and PgR were each considered negative if the Allred total score was 0-2 and positive if the score was 3-8 (25). HER2 protein overexpression was negative if 0 and 1+ by IHC. When the IHC was a score of 2+ or 3+, we performed HER2 gene amplification by fluorescence *in situ* hybridization (FISH). HER2 ≥ 2.2 shown by FISH was considered positive in accordance with the American Society of Clinical Oncology/College of American Pathologists (ASCO/CAP) guideline recommendations (26). We evaluated the patients' response by pathology with another CNB after the fourth course of docetaxel in patients who submitted written informed consent for this procedure before enrollment. All patients also underwent surgery after the fourth course of FEC.

Table I. Characteristics of patients.

Number of patients	37	Tumor	n (%)	Histology	n (%)
Median age, years	56	T1	5 (14)	Ductal	34 (92)
range	31-70	T2	29 (78)	Lobular	2 (5)
		T3	1 (3)	Other	1 (3)
		T4	2 (5)		
		Nodal status	n (%)	ER/HER2 status	n (%)
Menopausal status	n (%)	N0	10 (27)	ER+/HER2-	17 (46)
		N1	22 (59)	ER+/HER2+	6 (16)
Pre-menopausal	12(32)	N2	2 (5)	ER-/HER2+	4 (11)
Post-menopausal	25(68)	N3	3 (8)	ER-/HER2-	10 (27)

Statistical analysis. Continuous variables were analyzed with the Kolmogorov-Smirnov test. The relationships between quantitative variables were analyzed with the Pearson rank correlation coefficient. Multiple comparisons between groups were performed with the Scheffe test. All statistical analyses were performed using SPSS software (version 16.0) (IBM, Armonk, New York, USA).

Results

The characteristics of the 37 patients with breast cancer are given in Table I. Their age range was 31 to 70 (mean 56) years 12 patients were pre-menopausal and 25 were post-menopausal. The tumor sizes were T1-T4 (median=3.0 cm, range=1.7-5.0 cm) and nodal status was N0-N3. Invasive ductal carcinoma was diagnosed in 34 (92%) of the patients, and invasive lobular carcinoma was diagnosed in two (5%). ER/HER2 status is shown in Table II.

The ^{18}F -FDG-PET SUV_{max} reduction rate after the first course of docetaxel was significantly correlated with the tumor size reduction rate, as shown by MRI after the fourth course of docetaxel ($r=0.746$, $p<0.001$; Figure 2). The SUV_{max} decrease at two weeks after the first course of docetaxel were divided into three groups: <18% (low) [95% confidence interval (CI)=3%-14%], range=19%-44% (intermediate) [95% CI=26%-35%], and >45% (high) [95% CI=51%-61%] ($p<0.001$) (Figure 3).

The <18% SUV_{max} change group were non-responders; that is, none of the eight patients in this group achieved a clinical partial response (cPR) or clinical complete response (cCR), with only clinical stable disease (cSD) on MRI ($p<0.001$) (Figure 4). In the non-responder group, the number of ER+/HER2- cases was five (29%) and that of ER-/HER2- was three (30%). This group consisted of only ER+/HER2- and ER-/HER2- cases. The high-responder group had five ER+/HER2- patients (29%), five ER+/HER2+ patients (83%), three ER-/HER2+ patients (75%), and three

Table II. SUV_{max} reduction rates. SUV_{max} reduction rates were divided into three groups low, intermediate and high response.

SUV reduction rate	Less than 18% (low) (n=8)	19 to 44% (intermediate) (n=13)	More than 45% (high) (n=16)
Median age range	58 33-69	54 34-69	51 31-70
ER+/HER2-, % (n=17)	29% (n=5)	42% (n=7)	29% (n=5)
ER+/HER2+, % (n=6)	0% (n=0)	17% (n=1)	83% (n=5)
ER-/HER2+, % (n=4)	0% (n=0)	25% (n=1)	75% (n=3)
ER-/HER2-, % (n=10)	30% (n=3)	40% (n=4)	30% (n=3)

ER-/HER2- patients (30%). HER2+ groups had good response regardless of ER status (Table II).

Discussion

Several studies have shown that ^{18}F -FDG-PET is a good parameter for predicting the response of breast cancer to NCT (13-20). A meta-analysis by Wang *et al.* revealed that performing ^{18}F -FDG-PET earlier, after the first or second course of chemotherapy, can gain significantly better parameters of accuracy than ^{18}F -FDG-PET performed later, after the third course or beyond (27). Kolesnikov-Gauthier *et al.* reported the predictive value of NCT failure in breast cancer using ^{18}F -FDG-PET after the first course of FEC at 500/100/500 mg/m². They found that a decrease in SUV_{max} of less than 15% after the first course was a very potent predictor of NCT failure, especially of pCR, even when the chemotherapy regimen was changed after the third course (16).

In addition to these findings obtained with breast cancer, Wieder *et al.*'s study of esophageal squamous cell carcinoma

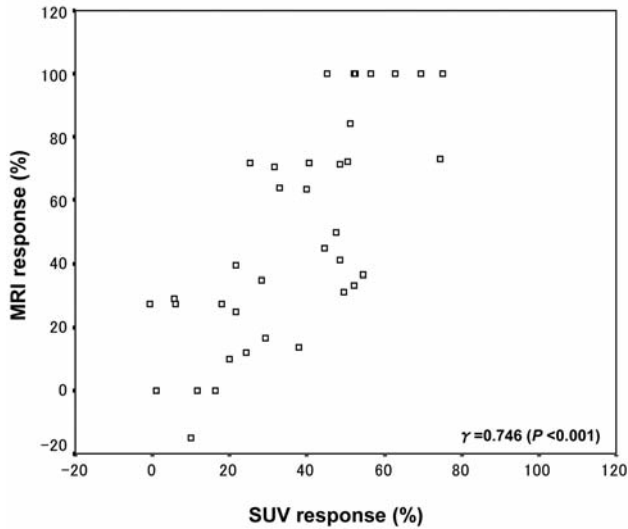


Figure 2. Correlation between SUV_{max} response rate at two weeks after the first course of docetaxel and tumor size reduction rate with (MRI) after the fourth course of docetaxel.

revealed that changes in tumor metabolic activity of SUV_{max} after 14 days of preoperative chemoradiotherapy were significantly correlated with tumor response and patient survival (8). We set the evaluation time point at two weeks after the first course of chemotherapy for non-responders, who should be identified as early as possible to avoid ineffective and potentially harmful treatment. We used the SUV_{max} reduction rate as the measure of the clinical response because a cut-off value has not been established in SUV_{max} as a measure of the metabolic response in prior studies. We analyzed our patients' MRI images after their fourth course of docetaxel as a surrogate clinical measure in the place of a pathological analysis.

After 2005, a sharp increase in the use of taxane-based chemotherapy and a decline in anthracycline-based chemotherapy for breast cancer was seen. In a Medicare breast cancer cohort in the U.S. in 2008, 51% of the patients received taxane-based chemotherapy and 32% received anthracycline-based chemotherapy (23).

Our study has several limitations. The pathological response to docetaxel was evaluated with ultrasound-guided CNB. CNB was performed after the fourth course of docetaxel and before the first course of FEC. There were no relative data between the ^{18}F -FDG-PET response rate after the first course of docetaxel and the pathological response obtained by CNB after the fourth course of docetaxel. It was difficult to obtain the appropriate part of the malignant lesion by CNB, especially the highly responsive part after chemotherapy, because ultrasound cannot differentiate viable tissue from fibrotic changes in tumors (28, 29). We also did

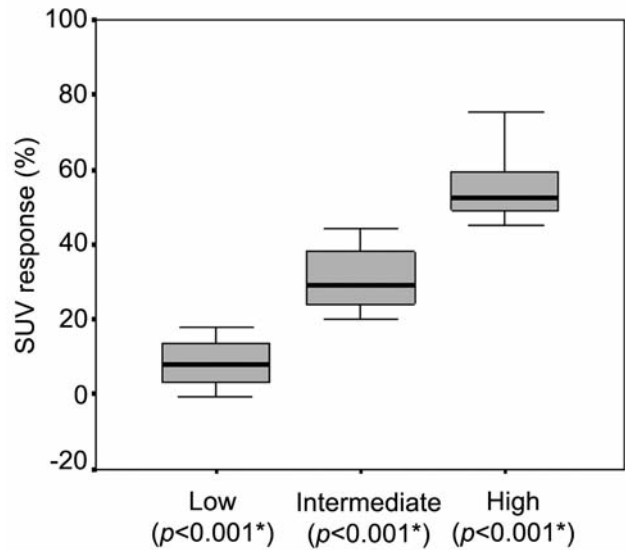


Figure 3. ^{18}F -FDG-PET (SUV_{max} reduction rate at two weeks after the first course of docetaxel in three groups: <18% (low) [95% confidence interval (CI)=3%-14%], range=19%-44% (intermediate) [95% CI=26%-35%], and >45% (high) [95% CI=51%-61%] ($p<0.001$).

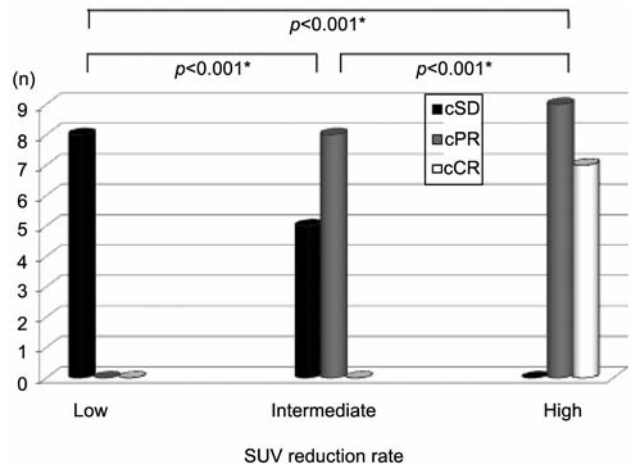


Figure 4. The low SUV_{max} reduction group were non-responders with only cSD with MRI. cCR was only found in the high-response group.

not present the patients' pathological responses after surgery, because the efficacy of the FEC was included in the final pathological result.

Concomitant trastuzumab chemotherapy was required to increase the pCR rate in an HER2-positive breast cancer population (30). In Japan, however, trastuzumab was not available as an NCT regimen until November 2011, which is later than our study's enrollment period.

A clear tumor shown by morphology is adequate for the determination of the ROI, whereas the ROI in a diffused, expansive or inflammatory lesion is not reliable for defining the tumor boundaries. In the present study, 41 patients with invasive carcinoma were eligible but only 37 were assessable. Krak *et al.* showed that the method used to define the ROI was of crucial importance in the monitoring of tumor FDG uptake during therapy, but no consensus has been reached on the optimal type of ROI for monitoring response during therapy (31). Shankar *et al.* showed consensus recommendations for the use of ¹⁸F-FDG-PET as an indicator of therapeutic response; that is, that threshold-determination or edge-finding algorithms could be applied with less subjective interaction in the determination of ROIs by a technician or physician (1). In the present study, two radiologists determined the ROIs or range of lesion.

Greater numbers of patients and further observations are necessary to further determine the utility of ¹⁸F-FDG-PET in predicting response to docetaxel in NCT.

Conclusion

An SUV_{max} decrease of less than 18% after the first course of docetaxel appears to indicate potential failure of docetaxel in NCT.

Acknowledgements

We gratefully thank all of the patients who participated in this study. We address particular thanks to the members of the Gunma Prefectural Cancer Center who supported this study.

References

- Shankar LK, Hoffman JM, Bacharach S, Graham MM, Karp J, Lammertsma AA, Larson S, Mankoff DA, Siegel BA, Van den Abbeele A, Yap J and Sullivan D: Consensus Recommendations for the Use of ¹⁸F-FDG PET as an Indicator of Therapeutic Response in Patients in National Cancer Institute Trials. *J Nucl Med* 47: 1059-1066, 2006.
- Kubota K: From tumor biology to clinical PET: A review of positron emission tomography (PET) in oncology. *Ann Nucl Med* 15: 471-486, 2001.
- Warburg O: *The Metabolism of Tumors*. London, U.K Constable Press (consensus). 1930.
- Miles KA and Williams RE: Warburg revisited: Imaging tumour blood flow and metabolism. *Cancer Imaging* 8: 81-86, 2008.
- Haioun C, Itti E and Rahmouni A: [¹⁸F] Fluoro-2-deoxy-D-glucose positron-emission tomography (FDG-PET) in aggressive lymphoma: An early prognostic tool for predicting patient outcome. *Blood* 106: 1376-1381, 2005.
- Spaepen K, Stroobants S and Dupont P: Early restaging positron emission tomography with (18) F-fluorodeoxyglucose predicts outcome in patients with aggressive non-Hodgkin's lymphoma. *Ann Oncol* 13: 1356-1363, 2002.
- Weber WA, Ott K, Becker K, Dittler HJ, Helmberger H, Avril NE, Meisetschlager G, Busch R, Siewert JR, Schwaiger M and Fink U: Prediction of response to preoperative chemotherapy in adenocarcinomas of the esophagogastric junction by metabolic imaging. *J Clin Oncol* 19: 3058-3065, 2001.
- Wieder HA, Brucher BL, Zimmermann F, Becker K, Lordick F, Beer A, Schwaiger M, Fink U, Siewert JR and Stein HJ: Time course of tumor metabolic activity during chemoradiotherapy of esophageal squamous cell carcinoma and response to treatment. *J Clin Oncol* 22: 900-908, 2004.
- Ott K, Fink U, Becker K, Stahl A, Dittler HJ, Busch R, Stein H, Lordick F, Link T, Schwaiger M, Siewert JR and Weber WA: Prediction of response to preoperative chemotherapy in gastric carcinoma by metabolic imaging: Results of a prospective trial. *J Clin Oncol* 21: 4604-4610, 2003.
- Weber W, A Petersen V and Schmidt B: Positron emission tomography in non-small cell lung cancer: Prediction of response to chemotherapy by quantitative assessment of glucose use. *J Clin Oncol* 21: 2651-2657, 2003.
- Wahl RL, Zasadny K, Helvie M, Hutchins GD, Weber B and Cody R: Metabolic monitoring of breast cancer chemohormonotherapy using positron-emission tomography: Initial evaluation. *J Clin Oncol* 11: 2101-2111, 1993.
- Jansson T, Westlin JE, Ahlstrom H, Lilja A, Langstrom B and Bergh J: Positron-emission tomography studies in patients with locally advanced and/or metastatic breast cancer: A method for early therapy evaluation? *J Clin Oncol* 13: 1470-1477, 1995.
- Smith IC, Welch AE, Hutcheon AW, Miller ID, Payne S, Chilcott F, Waikar S, Whitaker T, Ah-See AK and Eremin O: Positron-emission tomography using [(18)F]-fluorodeoxy-D-glucose to predict the pathologic response of breast cancer to primary chemotherapy. *J Clin Oncol* 18: 1676-1688, 2000.
- Schelling M, Avril N, Nahrig J, Kuhn W, Romer W, Sattler D, Werner M, Dose J, Janicke F and Graeff H: Positron-emission tomography using [F-18] fluorodeoxyglucose for monitoring primary chemotherapy in breast cancer. *J Clin Oncol* 18: 1689-1695, 2000.
- Mankoff DA, Dunnwald LK, Gralow JR, Ellis GK, Schubert EK, Tseng J, Lawton TJ, Linden HM and Livingston RB: Changes in blood flow and metabolism in locally advanced breast cancer treated with neoadjuvant chemotherapy. *J Nucl Med* 44: 1806-1814, 2003.
- Kolesnikov-Gauthier H, Vanlemmens L, Baranzelli MC, Vennin P, Servent V, Fournier C, Carpentier P and Bonnetterre J: Predictive value of neoadjuvant chemotherapy failure in breast cancer using FDG-PET after the first course. *Breast Cancer Res Treat* 31: 1517-1525, 2012.
- Rousseau C, Devillers A and Sagan C: Monitoring of early response to neoadjuvant chemotherapy in stage II and III breast cancer by [¹⁸F] fluorodeoxyglucose positron-emission tomography. *J Clin Oncol* 24: 5366-5372, 2006.
- Schwarz-Dose J, Untch M and Tiling R: Monitoring primary systemic therapy of large and locally advanced breast cancer by using sequential positron-emission tomography imaging with [¹⁸F] fluorodeoxyglucose. *J Clin Oncol* 27: 535-541, 2009.
- Kumar A, Kumar R and Seenu V: The role of 18 F-FDG PET/CT in evaluation of early response to neoadjuvant chemotherapy in patients with locally advanced breast cancer. *Eur Radiol* 19: 1347-1357, 2009.

- 20 Martoni A, Zamagni C and Quercia S: Predictive role of [¹⁸F] FDG-PET early evaluation in patients (pts) undergoing preoperative chemotherapy (PCT) for breast cancer (BC). *J Clin Oncol. ASCO Annu Meet Proc (Post-Meeting Edition)* 28: 635, 2010.
- 21 Bear HD, Anderson S, Brown A, Smith R, Mamounas EP, Fisher B, Margolese R, Theoret H, Soran A, Wickerham DL and Wolmark N: The effect on tumor response of adding sequential preoperative docetaxel to preoperative doxorubicin and cyclophosphamide: Preliminary results from National Surgical Adjuvant Breast and Bowel Project Protocol B-27. *J Clin Oncol* 21: 4165-4174, 2003.
- 22 Rastogi P, Anderson SJ and Bear HD: Preoperative chemotherapy: Updates of National Surgical Adjuvant Breast and Bowel Project Protocols B-18 and B-27. *J Clin Oncol* 26: 778-785, 2008.
- 23 Giordano SH, Lin YL, Kuo YF, Hortobagyi GN and Goodwin JS: Decline in the use of anthracyclines for breast cancer. *J Clin Oncol* 30: 2232-2239, 2012.
- 24 Partridge SC, Gibbs JE, Lu Y, Esserman LJ, Sudilovsky D and Hylton NM: Accuracy of MR imaging for revealing residual breast cancer in patients who have undergone neoadjuvant chemotherapy. *Am J Roentgenol* 179: 1193-1199, 2002.
- 25 Harvey JM, Clark GM, Osborne CK and Allred DC: Estrogen receptor status by immunohistochemistry is superior to the ligand-binding assay for predicting response to adjuvant endocrine therapy in breast cancer. *J Clin Oncol* 7: 1474-1481, 1999.
- 26 Wolff AC, Hammond ME, Schwartz JN, Hagerty KL, Allred DC, Cote RJ, Dowsett M, Fitzgibbons PL, Hanna WM, Langer A, McShane LM, Paik S, Pegram MD, Perez EA, Press MF, Rhodes A, Sturgeon C, Taube SE, Tubbs R, Vance GH, van de Vijver M, Wheeler TM and Hayes DF: American Society of Clinical Oncology/College of American Pathologists Guideline Recommendations for Human Epidermal Growth Factor Receptor 2 Testing in Breast Cancer. *Arch Pathol Lab Med* 131: 18-43, 2007.
- 27 Wang Y, Zhang C, Liu J and Huang G: Is ¹⁸F-FDG PET accurate to predict neoadjuvant therapy response in breast cancer? A meta-analysis. *Breast Cancer Res Treat* 131: 357-369, 2012.
- 28 Vinnicombe SJ, MacVicar AD, Guy RL, Sloane JP, Powles TJ, Knee G, and Husband JE: Primary breast cancer: Mammographic changes after neoadjuvant chemotherapy, with pathologic correlation. *Radiology* 198: 333-340, 1996.
- 29 Helvie MA, Joynt LK, Cody RL, Pierce LJ, Adler DD and Merajver D: Locally advanced breast carcinoma: Accuracy of mammography versus clinical examination in the prediction of residual disease after chemotherapy. *Radiology* 198: 327-332, 1996.
- 30 Buzdar AU, Valero V, Ibrahim NK, Francis D, Broglio KR, Theriault RL, Puzstai L, Green MC, Singletary SE, Hunt KK, Sahin AA, Esteva F, Symmans WF, Ewer MS, Buchholz TA and Hortobagyi GN: Neoadjuvant therapy with paclitaxel followed by 5-fluorouracil, epirubicin, and cyclophosphamide chemotherapy and concurrent trastuzumab in human epidermal growth factor receptor 2-positive operable breast cancer: an update of the initial randomized study population and data of additional patients treated with the same regimen. *Clin Cancer Res* 3: 228-233, 2007.
- 31 Krak NC, Hoekstra OS and Lammertsma AA: Measuring response to chemotherapy in locally advanced breast cancer: Methodological considerations. *Eur J Nucl Med Mol Imaging* 31(Suppl 1): S103-111, 2004.

Received November 12, 2013

Revised December 2, 2013

Accepted December 3, 2013

Instructions to Authors 2014

General Policy. ANTICANCER RESEARCH (AR) will accept original high quality works and reviews on all aspects of experimental and clinical cancer research. The Editorial Policy suggests that priority will be given to papers advancing the understanding of cancer causation, and to papers applying the results of basic research to cancer diagnosis, prognosis, and therapy. AR will also accept the following for publication: (a) Abstracts and Proceedings of scientific meetings on cancer, following consideration and approval by the Editorial Board; (b) Announcements of meetings related to cancer research; (c) Short reviews (of approximately 120 words) and announcements of newly received books and journals related to cancer, and (d) Announcements of awards and prizes.

The principal aim of AR is to provide prompt publication (print and online) for original works of high quality, generally within 1-2 months from final acceptance. Manuscripts will be accepted on the understanding that they report original unpublished works on the cancer problem that are not under consideration for publication by another journal, and that they will not be published again in the same form. All authors should sign a submission letter confirming the approval of their article contents. All material submitted to AR will be subject to review, when appropriate, by two members of the Editorial Board and by one suitable outside referee. The Editors reserve the right to improve manuscripts on grammar and style.

The Editors and Publishers of AR accept no responsibility for the contents and opinions expressed by the contributors. Authors should warrant due diligence in the creation and issuance of their work.

NIH Open Access Policy. The journal acknowledges that authors of NIH funded research retain the right to provide a copy of the final manuscript to the NIH four months after publication in ANTICANCER RESEARCH, for public archiving in PubMed Central.

Copyright. Once a manuscript has been published in ANTICANCER RESEARCH, which is a copyrighted publication, the legal ownership of all published parts of the paper has been transferred from the Author(s) to the journal. Material published in the journal may not be reproduced or published elsewhere without the written consent of the Managing Editor or Publisher.

Format. Two types of papers may be submitted: (i) Full papers containing completed original work, and (ii) review articles concerning fields of recognisable progress. Papers should contain all essential data in order to make the presentation clear. Reasonable economy should be exercised with respect to the number of tables and illustrations used. Papers should be written in clear, concise English. Spelling should follow that given in the "Shorter Oxford English Dictionary".

Manuscripts. Submitted manuscripts should not exceed fourteen (14) pages (approximately 250 words per double - spaced typed page), including abstract, text, tables, figures, and references (corresponding to 4 printed pages). Papers exceeding four printed pages will be subject to excess page charges. All manuscripts should be divided into the following sections:

(a) *First page* including the title of the presented work [not exceeding fifteen (15) words], full names and full postal addresses of all Authors, name of the Author to whom proofs are to be sent, key words, an abbreviated running title, an indication "review", "clinical", "epidemiological", or "experimental" study, and the date of submission. (Note: The order of the Authors is not necessarily indicative of their contribution to the work. Authors may note their individual contribution(s) in the appropriate section(s) of the presented work); (b) *Abstract* not exceeding 150 words, organized according to the following headings: Background/Aim - Materials and Methods/Patients and Methods - Results - Conclusion; (c) *Introduction*; (d) *Materials and Methods/Patients and Methods*; (e) *Results*; (f) *Discussion*; (g) *Acknowledgements*; (h) *References*. All pages must be numbered consecutively. Footnotes should be avoided. Review articles may follow a different style according to the subject matter and the Author's opinion. Review articles should not exceed 35 pages (approximately 250 words per double-spaced typed page) including all tables, figures, and references.

Figures. All figures (whether photographs or graphs) should be clear, high contrast, at the size they are to appear in the journal: 8.00 cm (3.15 in.) wide for a single column; 17.00 cm (6.70 in.) for a double column; maximum height: 20.00 cm (7.87 in.). Graphs must be submitted as photographs made from drawings and must not require any artwork, typesetting, or size modifications. Symbols, numbering and lettering should be clearly legible. The number and top of each figure must be indicated. Colour plates are charged.

Tables. Tables should be typed double-spaced on a separate page, numbered with Roman numerals and should include a short title.

References. Authors must assume responsibility for the accuracy of the references used. Citations for the reference sections of submitted works should follow the standard form of "Index Medicus" and must be numbered consecutively. In the text, references should be cited by number. Examples: 1 Sumner AT: The nature of chromosome bands and their significance for cancer research. *Anticancer Res* 1: 205-216, 1981. 2 McGuire WL and Chamnes GC: Studies on the oestrogen receptor in breast cancer. In: *Receptors for Reproductive Hormones* (O' Malley BW, Chamnes GC (eds.). New York, Plenum Publ Corp., pp 113-136, 1973.

Nomenclature and Abbreviations. Nomenclature should follow that given in "Chemical Abstracts", "Index Medicus", "Merck Index", "IUPAC –IUB", "Bergey's Manual of Determinative Bacteriology", The CBE Manual for Authors, Editors and Publishers (6th edition, 1994), and MIAME Standard for Microarray Data. Human gene symbols may be obtained from the HUGO Gene Nomenclature Committee (HGNC) (<http://www.gene.ucl.ac.uk/>). Approved mouse nomenclature may be obtained from <http://www.informatics.jax.org/>. Standard abbreviations are preferable. If a new abbreviation is used, it must be defined on first usage.

Clinical Trials. Authors of manuscripts describing clinical trials should provide the appropriate clinical trial number in the correct format in the text.

For International Standard Randomised Controlled Trials (ISRCTN) Registry (a not-for-profit organization whose registry is administered by Current Controlled Trials Ltd.) the unique number must be provided in this format: ISRCTNXXXXXXXX (where XXXXXXXX represents the unique number, always prefixed by "ISRCTN"). Please note that there is no space between the prefix "ISRCTN" and the number. Example: ISRCTN47956475.

For Clinicaltrials.gov registered trials, the unique number must be provided in this format: NCTXXXXXXXX (where XXXXXXXX represents the unique number, always prefixed by 'NCT'). Please note that there is no space between the prefix 'NCT' and the number. Example: NCT00001789.

Ethical Policies and Standards. ANTICANCER RESEARCH agrees with and follows the "Uniform Requirements for Manuscripts Submitted to Biomedical Journals" established by the International Committee of Medical Journal Editors in 1978 and updated in October 2001 (www.icmje.org). Microarray data analysis should comply with the "Minimum Information About Microarray Experiments (MIAME) standard". Specific guidelines are provided at the "Microarray Gene Expression Data Society" (MGED) website. Presentation of genome sequences should follow the guidelines of the NHGRI Policy on Release of Human Genomic Sequence Data. Research involving human beings must adhere to the principles of the Declaration of Helsinki and Title 45, U.S. Code of Federal Regulations, Part 46, Protection of Human Subjects, effective December 13, 2001. Research involving animals must adhere to the Guiding Principles in the Care and Use of Animals approved by the Council of the American Physiological Society. The use of animals in biomedical research should be under the careful supervision of a person adequately trained in this field and the animals must be treated humanely at all times. Research involving the use of human foetuses, foetal tissue, embryos and embryonic cells should adhere to the U.S. Public Law 103-41, effective December 13, 2001.

Submission of Manuscripts. Please follow the Instructions to Authors regarding the format of your manuscript and references. There are 3 ways to submit your article (NOTE: Please use only one of the 3 options. Do not send your article twice.):

1. To submit your article online please visit: IIAR-Submissions (<http://www.iiar-anticancer.org/submissions/login.php>)
2. You can send your article via e-mail to journals@iiar-anticancer.org. Please remember to always indicate the name of the journal you wish to submit your paper. The text should be sent as a Word document (*.doc) attachment. Tables, figures and cover letter can also be sent as e-mail attachments.
3. You can send the manuscript of your article via regular mail in a USB stick, DVD, CD or floppy disk (including text, tables and figures) together with three hard copies to the following address:

John G. Delinasios
International Institute of Anticancer Research (IIAR)
Editorial Office of ANTICANCER RESEARCH,
IN VIVO, CANCER GENOMICS and PROTEOMICS.
1st km Kapandritiou-Kalamou Road
P.O. Box 22, GR-19014 Kapandriti, Attiki
GREECE

Submitted articles will not be returned to Authors upon rejection.

Galley Proofs. Unless otherwise indicated, galley proofs will be sent to the first-named Author of the submission. Corrections of galley proofs should be limited to typographical errors. Reprints, PDF files, and/or Open Access may be ordered after the acceptance of the paper. Requests should be addressed to the Editorial Office.

Copyright© 2014 - International Institute of Anticancer Research (J.G. Delinasios). All rights reserved (including those of translation into other languages). No part of this journal may be reproduced, stored in a retrieval system, or transmitted in any form or by any means, electronic, mechanical, photocopying, microfilming, recording or otherwise, without written permission from the Publisher.