

# **Risk Factors for the Development of Osteoarthritis after Anterior Cruciate Ligament Reconstruction**

Tomoyuki Nakagawa, Masashi Kimura, Atsuko Ogoshi  
Shinya Yanagisawa, Hiroshi Yorifuji and Kenji Takagishi

**May, 2017**

**THE KITAKANTO MEDICAL JOURNAL**

**Vol. 67, No. 2**

Original

## Risk Factors for the Development of Osteoarthritis after Anterior Cruciate Ligament Reconstruction

Tomoyuki Nakagawa<sup>1</sup>, Masashi Kimura<sup>1</sup>, Atsuko Ogoshi<sup>1</sup>, Shinya Yanagisawa<sup>1,2</sup>, Hiroshi Yorifuji<sup>3</sup> and Kenji Takagishi<sup>4,5</sup>

- 1 Gunma Sports Medicine Research Center, Zenshukai Hospital, 54-1 Utsuboi-machi, Maebashi, Gunma 379-2115, Japan
- 2 Department of Orthopaedic Surgery, Gunma University Hospital, 3-39-15 Showa-machi, Maebashi, Gunma 371-8511, Japan
- 3 Department of Anatomy, Gunma University Graduate School of Medicine, 3-39-22 Showa-machi, Maebashi, Gunma 371-8511, Japan
- 4 Department of Orthopaedic Surgery, Gunma University Graduate School of Medicine, 3-39-22 Showa-machi, Maebashi, Gunma 371-8511, Japan
- 5 St-Pierre Hospital, 786-7 Kamisano-machi, Takasaki, Gunma 370-0857, Japan

### Abstract

**Background:** Risk factors have been reported for osteoarthritis (OA) after anterior cruciate ligament (ACL) reconstruction, but previous studies did not include a control group, and may have included OA that would have naturally developed even in the absence of ACL injury. This study investigated risk factors compared with the patient's own contralateral knee.

**Methods:** Three hundred forty-nine patients who had undergone ACL reconstruction at least 15 years previously were invited to visit the hospital. After exclusion criteria were applied, 40 patients were included in the study, including 16 with progressive OA and 24 without OA. Progressive OA was defined as OA that was more advanced on the affected side than on the contralateral side. The variables evaluated included age at the time of surgery, time from injury to surgery, sex, graft material, cartilage damage, and meniscectomy.

**Results:** No significant differences between groups were seen in terms of age, time from injury to surgery, sex, graft material, or cartilage damage. Meniscectomy was ultimately performed significantly more frequently in the OA group (88%) than in the non-OA group (38%;  $p < 0.01$ ).

**Conclusions:** Meniscectomy was found to constitute a risk factor for the progression of OA after ACL reconstruction.

### Article Information

**Key words:**

ACL,  
OA,  
long term follow-up,  
meniscectomy

**Publication history:**

Received: February 2, 2017  
Revised: March 21, 2017  
Accepted: March 29, 2017

**Corresponding author:**

Tomoyuki Nakagawa  
Gunma Sports Medicine Research Center, Zenshukai Hospital, 54-1 Utsuboi-machi, Maebashi, Gunma 379-2115, Japan  
Tel: +81-27-261-5410  
E-mail: soragadaisuki@hotmail.com

### Introduction

The incidence of meniscus injury naturally increases after anterior cruciate ligament (ACL) rupture. An increased risk of osteoarthritis (OA) has also been reported.<sup>1,2</sup> There is broad consensus that ACL reconstruction should be performed to allow continued participation in sports. Whether ACL reconstruction decreases the risk of OA, however, remains controversial.<sup>1</sup>

Some reports have shown that ACL reconstruction, similar to conservative treatment, did not prevent OA progression.<sup>3,4</sup> However, cases in which a torn ACL was left in a dysfunctional state had a high probability of progressing to OA.<sup>5</sup> Knees with deficient ACLs were more likely to progress to OA compared with normal ACLs, but ACL reconstruction might not have prevented this even if it had been performed. Body mass index, sex, stability, concomitant meniscal injury, cartilage damage, and postoperative activity have been reported as risk factors for the progression of OA after ACL reconstruction.<sup>6-9</sup>

The studies reporting those factors were not controlled, however, and may have included risk factors for OA that developed naturally even in the absence of ACL injury. This study investigated risk

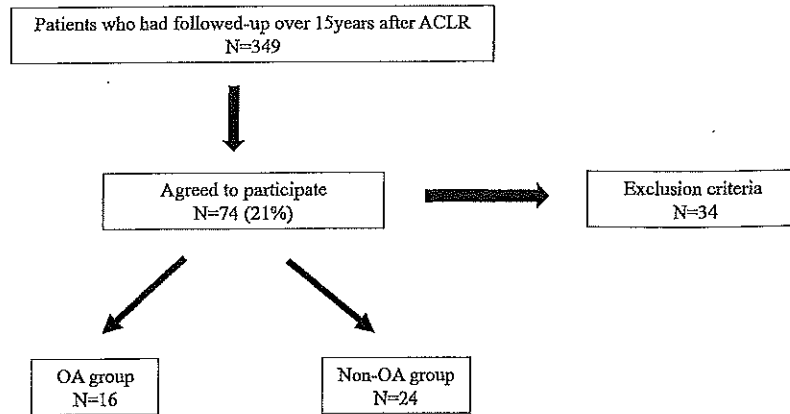


Fig. 1 Flowchart demonstrating the selection of patients for study inclusion.  
ACLR: anterior cruciate ligament reconstruction, OA: osteoarthritis

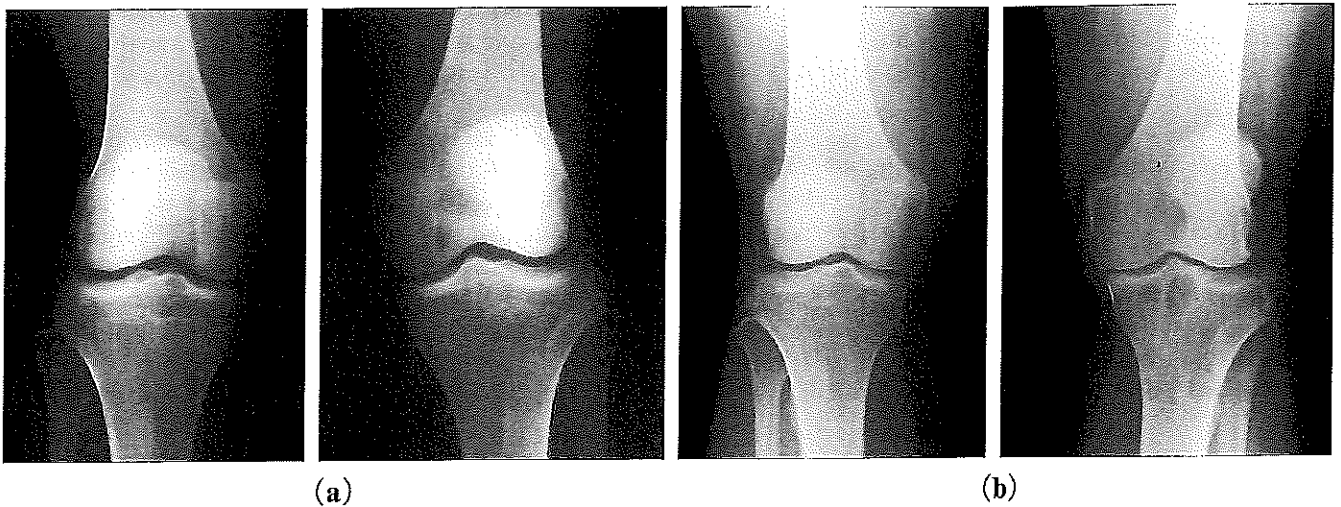


Fig. 2 Radiographs taken (a) prior to surgery and (b) 15 years after surgery  
The left knee 15 years after surgery showed progression of osteoarthritis. However, there was no sign of osteoarthritis in the unoperated right knee.

factors in the postoperative knee compared with the patient's contralateral knee. We investigated risk factors for the progression of OA in patients who had undergone ACL reconstruction at least 15 years prior.

### Hypothesis

Meniscectomy is the greatest risk factor for OA progression after ACL reconstruction.

### Materials and Methods

Patients who had undergone ACL reconstruction by knee specialists in a single institution between 1993 and 1997 were sent mailed invitations to attend the hospital. Those with an injury to the contralateral side, those in whom the ACL had re ruptured, and those with several injured ligaments requiring surgery were excluded. The remaining patients with progressive OA were then categorized as the OA group, and those without OA as the non-OA group. Direct mail was sent to 349 patients, of whom 74 (21%) agreed to

participate. After the exclusion criteria were applied, 40 patients were included in the study (OA group,  $n = 16$ ; non-OA group,  $n = 24$ ) (Fig. 1).

ACL reconstruction was performed using the bone-patellar tendon-bone (BTB) method between April 1993 and September 1996, and the quadrupled semitendinosus and gracilis (STG) tendon method between September 1996 and December 1997. For all patients, the tibia tunnel was formed central to the tibial attachment of the ACL and the femur tunnel was at 10-11 o'clock (right knee) using the transtibial technique. Partial resection of all concomitant meniscal injuries was performed.

In this study, progression of OA was defined as OA of the operated knee that was more advanced at the final evaluation than at the preoperative weight-bearing frontal plain X-rays, as determined by the Kellgren-Lawrence grade and compared with the contralateral side (Fig. 2). If OA was equally advanced on the contralateral side as on the operated side, then the operation was not considered to be at fault, and the

patient was not classified as having progressive OA.

The variables evaluated included age at the time of surgery, time from injury to surgery (waiting time), sex, graft material, cartilage damage at the time of surgery, meniscectomy, Lachman test and pivot-shift test results (classified at the time of final follow-up as normal, nearly normal, abnormal, or severely abnormal, per the International Knee Documentation Committee classification<sup>10</sup>) and side-to-side difference (SSD) between the operated and unoperated sides in anterior tibial translation on stressed X-ray (Telos SE).<sup>11</sup> SSD < 3 mm was classified as normal. Mean values and the number of patients with a mean SSD < 3 mm were compared between groups. The Mann-Whitney test, Fisher's test, and multiple logistic regression analysis were used for statistical analysis, with values of  $p < 0.05$  regarded as significant. In addition, necessary sample size for Fisher's test was 32 when  $\alpha$  value is 0.05,  $(1-\beta)$  value is 0.8, effect size is 0.5, and free value is 1 for the power analysis.

## Results

No significant difference in patient demographics was evident between the non-OA group and OA group (Table 1). Meniscectomy was performed significantly more frequently in the OA group (14/16, 88%) than in the non-OA group (9/24, 38%;  $p < 0.01$ ) (Table 2). No significant difference in the location of either medial meniscectomy or lateral meniscectomy was seen between groups (Table 3). Twelve patients (50%) in the non-OA group were classified as normal on the Lachman test, a higher proportion than the four patients (25%) in OA group, but this difference was not significant. Twelve patients (50%) in the non-OA group were also classified as normal on the pivot-shift test, compared with six patients (38%) in the OA group, but this difference was also not significant. Mean SSD tended to be better for the non-OA group ( $3.9 \pm 3.9$  mm) than for the OA group ( $5.2 \pm 2.7$  mm), but the difference was not significant. The proportion of normal patients with SSD < 3 mm was also higher in the non-OA group (10 patients, 42%) than in the OA group (3 patients, 19%), but again, this difference was not significant. Multiple logistic regression analysis identified meniscectomy as the only risk factor for OA progression ( $p = 0.01$ ) (Table 4).

## Discussion

These results show that meniscectomy represented the only significant risk factor for the progression of OA after ACL reconstruction. Ahn *et al.*<sup>6</sup> reported that 91.4% of patients who underwent ACL reconstruction also suffered from meniscal injury and that meniscectomy was a risk factor for the development of OA in the medial compartment. Although the patients in that study showed a higher rate of concomitant meniscal injury compared with those in this study, this similarly constituted a risk factor. Shelbourne *et al.*<sup>12</sup>

**Table 1** Patient demographics

	Non-OA (n=24)	OA (n=16)	P
Age (years)	28.0 ± 9.4	28.3 ± 10.5	0.75
Waiting time (months)	27.8 ± 64.8	44.6 ± 65.7	0.45
Female	10/24	8/16	0.75
Graft material		0.99	
	BTB 16	10	
	STG 8	6	
Cartilage damage	5/24	2/16	0.68

Values are given as mean ± standard deviation or number.

Waiting time: time from injury to surgery, OA: osteoarthritis, BTB: bone-patellar tendon-bone, STG: quadrupled semitendinosus and gracilis

No significant difference in patient demographics.

**Table 2** Total number of subjects who underwent meniscectomy

	Non-OA	OA
Meniscectomy performed	9	14
Meniscectomy not performed	15	2
Total	24	16

OA: osteoarthritis

Meniscectomy was performed significantly more frequently in the OA group ( $p < 0.01$ ).

**Table 3** Details of meniscus injuries

	Breakdown of meniscectomies (%)	
	Non-OA (n=9/24)	OA (n=14/16)
Medial meniscectomy	6 (25%)	8 (50%)
Lateral meniscectomy	2 (8%)	3 (19%)
Both meniscectomy	1 (4%)	3 (19%)

OA: osteoarthritis

No significant difference in the location of meniscectomy was seen between groups ( $p = 0.17$ ).

**Table 4** Multiple logistic regression

Factor	Odds ratio	95%CI	p
Age	1.1	0.9-1.2	0.33
Waiting time	1.0	1.0-1.0	0.87
Sex	1.0	0.1-8.8	0.99
Graft material	0.5	0.1-4.0	0.52
Cartilage damage	1.5	0.1-23.4	0.75
Meniscectomy	34.1	2.2-522.4	0.01*
Lachman test	0.9	0.1-11.7	0.96
Pivot-shift test	2.1	0.2-24.8	0.56
SSD	1.2	0.8-1.7	0.32

\*: Significant difference

Waiting time: time from injury to surgery, SSD: side-to-side difference

Meniscectomy was the only risk factor for osteoarthritis progression.

also found that more patients with concomitant meniscal injury developed OA compared with those with no injury.

Many authors reported that OA progressed if the ACL was torn. Amin *et al.*<sup>5</sup> investigated whether the ACL was torn or not in patients with OA, and suggested that, after correcting for age, BMI, and sex, a torn ACL was a risk factor for OA. Swärd *et al.*<sup>13</sup> reported that knees in which 15 years had elapsed since an ACL rupture progressed to OA more frequently than the contralateral knee. When meniscus injury was also considered, van Meer *et al.*<sup>14</sup> reported that meniscal injury and meniscectomy had a strong relationship to OA development. In addition, Neuman *et al.*<sup>15</sup> prospectively followed patients after ACL rupture for 15 years, and found no OA among patients without

meniscal injury, but OA in 37% of those with meniscal injury. Therefore, there was an association between torn ACL and OA, but meniscal injury accompanied by torn ACL may have a stronger association with OA.

Keene *et al.*<sup>16</sup> reported that prevalence of meniscal injury increased in knees with a deficient ACL. Cipolla *et al.*<sup>17</sup> reported that the acute period after ACL rupture was associated with many lateral meniscal injuries, and that medial meniscal injuries increased in the chronic period. The abovementioned results all consistently show that the incidence of meniscal injury is increased in knees with torn ACLs.

Dong *et al.*<sup>18</sup> showed that contact pressure on the cartilage became greater after meniscal injury or meniscectomy. Roos *et al.*<sup>19</sup> reported that patients with meniscectomy had a 14-fold higher risk of OA, and Englund *et al.*<sup>20</sup> described meniscectomy as a risk factor of OA over 15 years of follow-up. These results confirm that meniscal damage has a strong association with OA.

We did not find any significant differences in factors associated with anterior instability or rotatory instability. Shelbourne *et al.*<sup>12</sup> reported that KT 1000 score was not a risk factor for the progression of OA. Murray *et al.*<sup>8</sup> investigated the association between instability-associated scores and OA, and also found no significant difference. As mentioned previously, however, there is now a unified consensus that meniscal injury increases in ACL-deficient knees, and a link between ACL stability and the development of OA cannot be entirely ruled out. The establishment of numerical scores for rotatory instability will be required in the future, as will further studies on the relation between ACL stability and OA.

As stated by Oiestad *et al.*,<sup>21</sup> the use of the unoperated knee as a control is an effective method of controlling for factors such as BMI and activity, which are in constant flux. If OA develops owing to these factors, it should progress at the same rate on both sides, and this study therefore did not classify patients with similar degrees of progression in both legs into the OA group. This is a significant point of differentiation of our study from previous studies.

The present study has limitations that need to be considered when interpreting the results. First, a retrospective study was applied, and the proportion of patients who were followed-up was quite low (74/349, 21%). Many of those patients had to be excluded, leaving only 40 participants (11%) in the study. Furthermore, the sample size is insufficient for multiple logistic regression analysis. However, because the effect size is 1.03, and  $1-\beta$  is 0.99 according to a post hoc test, the sample size was sufficient for Fisher's test. Second, all subjects with meniscal injury underwent meniscectomy, and as a result, no patients underwent meniscal repair. If menisci were repaired, we believe there would have been less progression of OA.

## Conclusion

Meniscectomy is a risk factor for the progression of OA after ACL reconstruction.

## Compliance with Ethical Standards

**Disclosure of potential conflicts of interest:** None

**Ethical Approval:** All procedures performed in studies involving human participants were in accordance with the ethical standards of the institutional and/or national research committee and with the 1964 Helsinki declaration and its later amendments or comparable ethical standards.

**Informed consent:** Informed consent was obtained from all individual participants included in the study

**Conflicts of interest:** None

## References

1. Friel NA, Chu CR. The role of ACL injury in the development of posttraumatic knee osteoarthritis. *Clin Sports Med* 2013; 32: 1-12.
2. Snoeker BA, Bakker EW, Kegel CA, et al. Risk factors for meniscal tears: a systematic review including meta-analysis. *J Orthop Sports Phys Ther* 2013; 43: 352-367.
3. Streich NA, Zimmermann D, Bode G, et al. Reconstructive versus non-reconstructive treatment of anterior cruciate ligament insufficiency. A retrospective matched-pair long-term follow-up. *Int Orthop* 2011; 35: 607-613.
4. Kessler MA, Behrend H, Henz S, et al. Function, osteoarthritis and activity after ACL-rupture: 11 years follow-up results of conservative versus reconstructive treatment. *Knee Surg Sports Traumatol Arthrosc* 2008; 16: 442-448.
5. Amin S, Guermazi A, Lavalley MP, et al. Complete anterior cruciate ligament tear and the risk for cartilage loss and progression of symptoms in men and women with knee osteoarthritis. *Osteoarthritis Cartilage* 2008; 16: 897-902.
6. Ahn JH, Kim JG, Wang JH, et al. Long-term results of anterior cruciate ligament reconstruction using bone-patellar tendon-bone: an analysis of the factors affecting the development of osteoarthritis. *Arthroscopy* 2012; 28: 1114-1123.
7. Hart AJ, Buscombe J, Malone A, et al. Assessment of osteoarthritis after reconstruction of the anterior cruciate ligament: a study using single-photon emission computed tomography at ten years. *J Bone Joint Surg Br* 2005; 87: 1483-1487.
8. Murray JR, Lindh AM, Hogan NA, et al. Does anterior cruciate ligament reconstruction lead to degenerative disease?: Thirteen-year results after bone-patellar tendon-bone autograft. *Am J Sports Med* 2012; 40: 404-413.
9. Struwer J, Ziring E, Frangen TM, et al. Clinical outcome and prevalence of osteoarthritis after isolated anterior cruciate ligament reconstruction using hamstring graft: follow-up after two and ten years. *Int Orthop* 2013; 37: 271-277.
10. Irrgang JJ, Ho H, Harner CD, et al. Use of the International Knee Documentation Committee guidelines to assess outcome following anterior cruciate ligament reconstruction. *Knee Surg Sports Traumatol Arthrosc* 1998; 6: 107-114.
11. Beldame J, Bertiaux S, Roussignol X, et al. Laxity measurements using stress radiography to assess anterior cruciate ligament tears. *Orthop Traumatol Surg Res* 2011; 97: 34-43.
12. Shelbourne KD, Gray T. Minimum 10-year results after

- anterior cruciate ligament reconstruction: how the loss of normal knee motion compounds other factors related to the development of osteoarthritis after surgery. *Am J Sports Med* 2009; 37: 471-480.
13. Sward P, Fridén T, Boegård T, et al. Association between varus alignment and post-traumatic osteoarthritis after anterior cruciate ligament injury. *Knee Surg Sports Traumatol Arthrosc* 2013; 21: 2040-2047.
  14. van Meer BL, Meuffels DE, van Eijsden WA, et al. Which determinants predict tibiofemoral and patellofemoral osteoarthritis after anterior cruciate ligament injury? A systematic review. *Br J Sports Med* 2015; 49: 975-983.
  15. Neuman P, Englund M, Kostogiannis I, et al. Prevalence of tibiofemoral osteoarthritis 15 years after nonoperative treatment of anterior cruciate ligament injury: A prospective cohort study. *Am J Sports Med* 2008; 36: 1717-1725.
  16. Keene GC, Bickerstaff D, Rae PJ, et al. The natural history of meniscal tears in anterior cruciate ligament insufficiency. *Am J Sports Med* 1993; 21: 672-679.
  17. Cipolla M, Scala A, Gianni E, et al. Different patterns of meniscal tears in acute anterior cruciate ligament (ACL) ruptures and in chronic ACL-deficient knees. Classification, staging and timing of treatment. *Knee Surg Sports Traumatol Arthrosc* 1995; 3: 130-134.
  18. Dong Y, Hu G, Dong Y, et al. The effect of meniscal tears and resultant partial meniscectomies on the knee contact stresses: a finite element analysis. *Comput Methods Biomech Biomed Engin* 2014; 17: 1452-1463.
  19. Roos H, Laurén M, Adalberth T, et al. Knee osteoarthritis after meniscectomy: prevalence of radiographic changes after twenty-one years, compared with matched controls. *Arthritis Rheum* 1998; 41: 687-693.
  20. Englund M, Lohmander LS. Risk factors for symptomatic knee osteoarthritis fifteen to twenty-two years after meniscectomy. *Arthritis Rheum* 2004; 50: 2811-2819.
  21. Oiestad BE, Holm I, Aune AK, et al. Knee function and prevalence of knee osteoarthritis after anterior cruciate ligament reconstruction: a prospective study with 10 to 15 years of follow-up. *Am J Sports Med* 2010; 38: 2201-2210.